

EHTX — TEXEL/Texel

Note: the following sections in this chapter are intentionally left blank:
AD 2.7, AD 2.8, AD 2.11, AD 2.14, AD 2.19, AD 2.20, AD 2.21.

EHTX AD 2.1 AERODROME LOCATION INDICATOR AND NAME

EHTX — TEXEL/Texel

EHTX AD 2.2 AERODROME GEOGRAPHICAL AND ADMINISTRATIVE DATA

1	ARP co-ordinates and site at AD	53°06'55"N 004°50'01"E
2	Direction and distance from (city)	3.5 NM NNE from Den Burg.
3	Elevation/reference temperature	2 ft AMSL/19.5°C.
4	Geoid undulation at AD ELEV PSN	Not AVBL.
5	MAG VAR/annual change	0°E(2010)/8'E.
6	AD operator, postal address, telephone, telefax, email, AFS, website	Post: Texel Airport Ltd. Postweg 120 1795 JS De Cocksdorp, Texel The Netherlands Tel: +31 (0)222 311267 Fax: +31 (0)222 311250 Email: info@texelairport.nl URL: http://www.texelairport.nl
7	Types of traffic permitted (IFR/VFR)	VFR
8	Remarks	1. Aerodrome available for national and international civil air traffic with all types of aircraft up to 6000 kg AUW and gliders. 2. Aerodrome authority can admit aircraft with higher AUW.

EHTX AD 2.3 OPERATIONAL HOURS

1	AD operator	MON-SAT: 0800-1800 (0700-1700), SUN and HOL: 0900-1800 (0800-1700) or end of UDP, whichever is earlier. Outside AD OPR HR: O/R.
2	Customs and immigration	Customs: AD OPR HR. Immigration: NA.
3	Health and sanitation	NA
4	AIS briefing office	NA
5	ATS reporting office (ARO)	Competent ATS unit: ARO Schiphol, see EHAM AD 2.3.
6	MET briefing office	Self briefing, AD OPR HR.
7	ATS	NA
8	Fuelling	AD OPR HR.
9	Handling	NA
10	Security	NA
11	De-icing	NA
12	Remarks	NIL

EHTX AD 2.4 HANDLING SERVICES AND FACILITIES

1	Cargo-handling facilities	NIL
2	Fuel/oil types	100LL, Jet A1, Euro 95 / -.
3	Fuelling facilities/capacity	100LL: 50 000 litres, Jet A1: 50 000 litres, Euro 95: 500 litres.
4	De-icing facilities	NIL
5	Hangar space for visiting aircraft	Limited AVBL.
6	Repair facilities for visiting aircraft	AVBL O/R.

7	Remarks	NIL
---	---------	-----

EHTX AD 2.5 PASSENGER FACILITIES

1	Hotels	10 rooms at the aerodrome. Sufficient accommodation in Den Burg and De Koog.
2	Restaurants	At the aerodrome.
3	Transportation	Taxi (on request), bus and bicycle.
4	Medical facilities	First aid AVBL.
5	Bank and post office	AVBL in Den Burg.
6	Tourist office	AVBL in Den Burg.
7	Remarks	NIL

EHTX AD 2.6 RESCUE AND FIRE FIGHTING SERVICES

1	AD category for fire fighting	CAT 3.
2	Rescue equipment	2 fire trucks.
3	Capability for removal of disabled aircraft	Information not AVBL.
4	Remarks	NIL

EHTX AD 2.9 SURFACE MOVEMENT GUIDANCE AND CONTROL SYSTEM AND MARKINGS

1	Use of aircraft stand ID signs, TWY guide lines and visual docking/parking guidance system at aircraft stands	NIL
2	RWY and TWY markings and LGT	RWY: white cones; runway threshold identification lights (FLG W, weather depending). TWY: blue cones.
3	Stop bars	NIL
4	Remarks	NIL

EHTX AD 2.10 AERODROME OBSTACLES

For obstacles at and in the vicinity of the aerodrome see AD 2.EHTX-ADC.

EHTX AD 2.12 RUNWAY PHYSICAL CHARACTERISTICS

Designations RWY NR	True BRG	Dimensions of RWY (m)	Strength (PCN) and sur- face of RWY and SWY	THR co-ordinates RWY end co-ordinates THR GUND	THR elevation and highest elevation of TDZ of precision APCH RWY
1	2	3	4	5	6
04	036°	1109 x 40	6000 kg ¹⁾²⁾³⁾ grass	Not AVBL	NA
22	216°	1109 x 40	6000 kg ¹⁾²⁾³⁾ grass	Not AVBL	NA
13	126°	622 x 40	6000 kg ¹⁾²⁾³⁾ grass	Not AVBL	NA
31	306°	622 x 40	6000 kg ¹⁾²⁾³⁾ grass	Not AVBL	NA

Designations RWY NR	Slope of RWY- SWY	SWY dimensions (m)	CWY dimensions (m)	Strip dimensions (m)	OFZ
1	7	8	9	10	11
04	NA	NA	NA	NA	NA
22	NA	NA	NA	NA	NA
13	NA	NA	NA	NA	NA
31	NA	NA	NA	NA	NA

Remarks
12
¹⁾ Bearing strength. ²⁾ MAX tyre pressure 0.56 MPa. ³⁾ When surface conditions so permit, the aerodrome manager can admit aircraft with a higher AUW and a higher tyre pressure.

EHTX AD 2.13 DECLARED DISTANCES

RWY Designator	TORA (m)	TODA (m)	ASDA (m)	LDA (m)	Remarks
1	2	3	4	5	6
04	1109	1109	1109	1109	NIL
22	1109	1109	1109	1109	NIL
13	622	622	622	622	NIL
31	622	622	622	622	NIL

EHTX AD 2.15 OTHER LIGHTING, SECONDARY POWER SUPPLY

1	ABN/IBN location, characteristics and hours of operation	Information not AVBL.
2	LDI location and LGT Anemometer location and LGT	LDI and anemometer: 60 m N from helicopter parking area.
3	TWY edge and centre line lighting	NIL
4	Secondary power supply Switch-over time	NIL
5	Remarks	NIL

EHTX AD 2.16 HELICOPTER LANDING AREA

1	Co-ordinates TLOF or THR of FATO Geoid undulation	NIL
2	TLOF and/or FATO elevation m/ft	NIL
3	TLOF and FATO area dimensions, surface, strength, marking	NIL
4	True BRG of FATO	NIL
5	Declared distance available	NIL
6	APCH and FATO lighting	NIL
7	Remarks	Helicopter parking area 400 m N from THR RWY 04, lighted.

EHTX AD 2.17 ATS AIRSPACE

1	Designation and lateral limits	NA
2	Vertical limits	NA
3	Airspace classification	G
4	ATS unit call sign Language(s)	NA
5	Transition altitude	IFR: 3000 ft AMSL; VFR: 3500 ft AMSL.
6	Hours of applicability	NA
7	Remarks	NIL

EHTX AD 2.18 ATS COMMUNICATION FACILITIES

Service designation	Call sign	Channel/ Frequency (MHz)	Hours of operation	Remarks
1	2	3	4	5
Aerodrome information	Texel Radio	119.305	See EHTX AD 2.3	NIL

EHTX AD 2.22 FLIGHT PROCEDURES

1 VFR FLIGHT PROCEDURES AND REGULATIONS

Note: for visual approach chart and traffic circuits see AD 2.EHTX-VAC.1, AD 2.EHTX-VAC.2 and AD 2.EHTX-VAC.3.

1. The minimum approach altitude is 1500 ft AMSL.
2. The circuit altitude is 1000 ft AMSL.
3. The visual traffic circuit must be carried out within the lateral limits of the circuit area associated with the runway in use.
4. Joining and leaving the circuit shall take place in accordance with the rules of the standard circuit (see ENR 1.2 paragraph 8), except as described for the following runways:
 - **RWY 04:** after take-off climb to 1000 ft on runway heading and leave the circuit as indicated in the chart.
 - **RWY 22:** after take-off climb on runway heading. At orange circuit marker make lefthand turn to crosswind and leave the circuit as indicated in the chart.
 - **RWY 31:** leave the circuit as indicated in the chart.
5. The circuit area may not be overflown below an altitude of 1500 ft AMSL.
6. For motorised civil air traffic above the natural area Waddenzee the following applies:
 - a. flights below 1500 ft AGL are not allowed;
 - b. when ceiling < 1500 ft AGL or flight visibility < 8 km, flights between 1000 ft AGL and 1500 ft AGL are allowed within the corridors depicted on chart ENR 6-5.3 (see ENR 5.6 paragraph 1).
 - c. If weather conditions permit, pass the Texel coast at 1500 ft AMSL or above.
 - d. Descend to circuit altitude after passing the villages Oosterend and Oost.
7. Built-up areas and dunes shall be avoided as much as possible.
8. Marked areas must be avoided.

2 SEASONAL ARRIVAL AND DEPARTURE PROCEDURES

Yearly from 01 April until 01 October, seasonal arrival and departure procedures will be in force on saturday, sunday and public holidays (see AIP GEN 2.1).

1. For these procedures the following limits apply: visibility \geq 5 km and ceiling \geq 1500 ft AGL. Below these limits the normal circuit procedures are applicable.
2. Approaches to the aerodrome shall be made at 1500 ft AMSL.
3. Circuit altitude is 1000 ft AMSL.
4. Two-way radio contact on 119.305.
5. During OPR HR De Kooy TWR request for crossing clearance De Kooy CTR.
6. Built-up and shaded areas shall be avoided as much as possible.
7. Parachute jumping may take place.
8. Reporting points:
 - Point A: 3 NM SE of Oosterend.
 - Point B: 2 NM SW of Oosterend.
 - Point C: 4 NM SW of threshold RWY 04.
 - Point D: Coast 2 NM NE of Oosterend.
 - Point E: 3 NM NE of threshold RWY 22.

2.1 Arrival RWY 04/22

Note: for visual arrival chart and traffic circuits RWY 04/22, see AD 2.EHTX-VAC.2.

1. Pilots are requested to report over the reporting points mentioned hereafter, including final.
2. RWY 04, arriving from SE:
 - Report over point A at 1500 ft AMSL.
 - Proceed direct to point B; past B execute a continuous descent to final RWY 04.
3. RWY 04, arriving from SW:
 - Report over point C at 1500 ft AMSL.
 - Start the descent for final RWY 04.
4. RWY 22, arriving from SE (and De Kooy):
 - Report over point A at 1500 ft AMSL.
 - Turn right via coast line to point D.
 - Turn left on a direct left hand base leg and execute a continuous descent to final RWY 22.
5. RWY 22 arriving from NE:
 - Report over point E at 1500 ft AMSL.
 - Stay well clear of built-up area (De Cocksdorp).
 - Proceed direct for a straight-in RWY 22.

2.2 Departure RWY 04/22

Note: for visual departure chart and traffic circuits RWY 04/22, see AD 2.EHTX-VAC.3.

1. Reporting points are on request.
2. RWY 04, departing to the NE:
 - Climb on runway heading to 1500 ft AMSL.
 - Avoid built-up areas.
3. RWY 04, departing to the SE:

- Climb on runway heading to 1200 ft AMSL.
 - Make a climbing right turn out to 1500 ft AMSL.
 - Avoid built-up areas.
4. RWY 22, departing to the SW:
- Climb on runway heading to 1500 ft AMSL.
 - Avoid built-up areas , especially Den Burg.
 - Contact De Kooy TWR for crossing the CTR.
5. RWY 22, departing to the SE:
- Climb on runway heading to 1000 ft AMSL.
 - Make a climbing left turn out to 1500 ft AMSL or above.
 - Avoid the built-up areas.

2.3 Arrival RWY 13/31

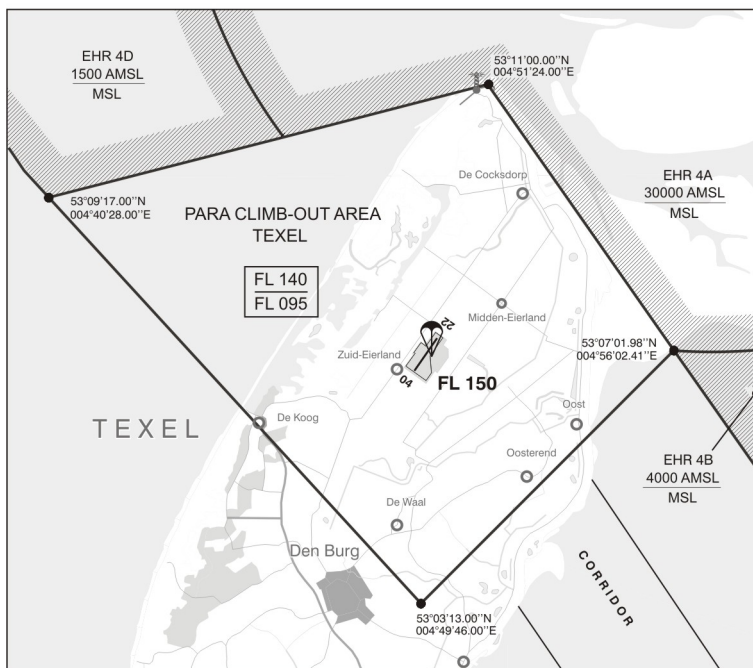
- Proceed to the aerodrome at 1500 ft AMSL or above.
- Avoid built-up areas.
- Join the standard circuit procedure.
- Circuit altitude is 1000 ft AMSL.

EHTX AD 2.23 ADDITIONAL INFORMATION

1 CAUTIONS AND ADDITIONAL INFORMATION

1. Parachute jumping may take place as stated in ENR 5.5 and/or as promulgated by NOTAM.
2. To accommodate parachute jumping from MAX FL 140 the para climb-out area Texel is established in TRA 10.

Area	Lateral Limits	Upper limit Lower limit
Para climb-out area Texel	53°09'17.00"N 004°40'28.00"E; 53°11'00.00"N 004°51'24.00"E; 53°07'01.98"N 004°56'02.41"E; 53°03'13.00"N 004°49'46.00"E; to point of origin.	FL 140 FL 095

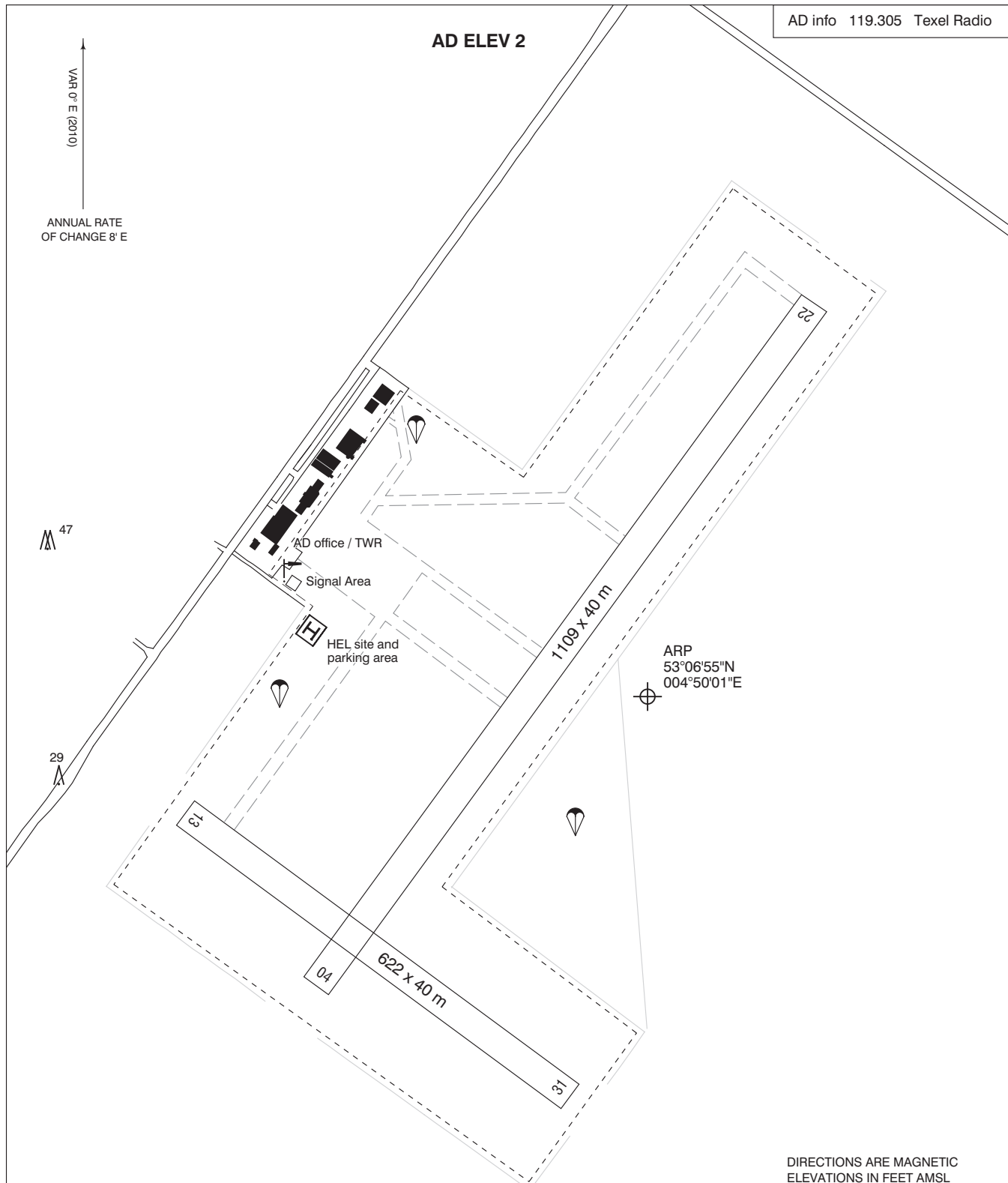


3. Grass cutting may take place at irregular times.

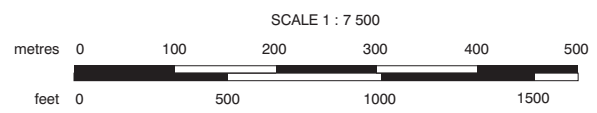
EHTX AD 2.24 CHARTS RELATED TO AN AERODROME

Type of chart	Page
Aerodrome chart	AD 2.EHTX-ADC
Visual approach chart/VFR procedures	AD 2.EHTX-VAC.1
Seasonal VFR arrival procedures RWY 04/22	AD 2.EHTX-VAC.2
Seasonal VFR departure procedures RWY 04/22	AD 2.EHTX-VAC.3

AD info 119.305 Texel Radio



DIRECTIONS ARE MAGNETIC
ELEVATIONS IN FEET AMSL
DIMENSIONS IN METRES



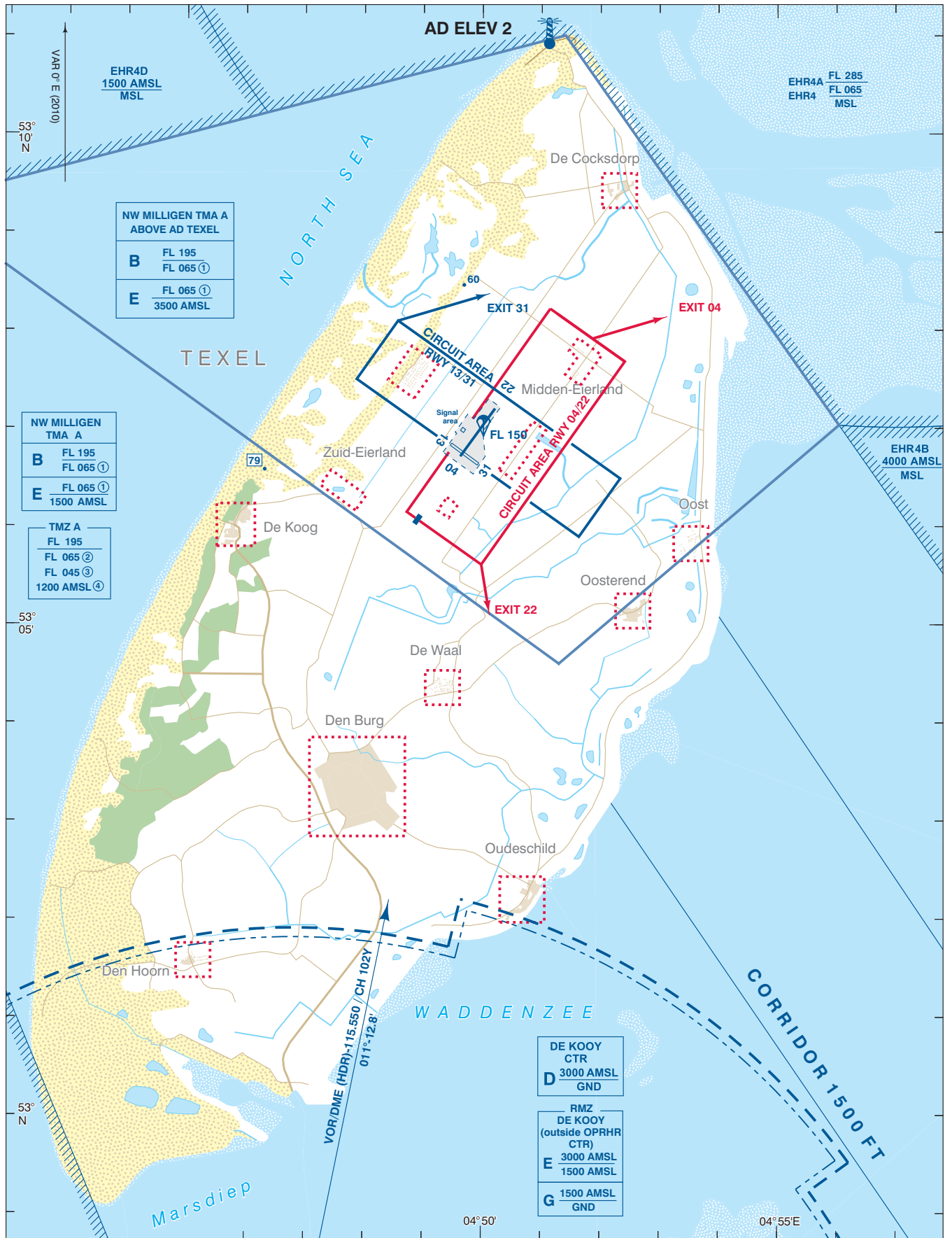
PHYSICAL CHARACTERISTICS		BEARING STRENGTH		
RWY	DIRECTION GEO	MAX AUW*	MAX TYRE PRESS*	SURFACE
04	036°	6000 kg	0.56 MPa	GRASS
22	216°	6000 kg	0.56 MPa	GRASS
13	126°	6000 kg	0.56 MPa	GRASS
31	306°	6000 kg	0.56 MPa	GRASS

* When surface conditions so permit, the aerodrome manager can admit aircraft with a higher AUW and a higher tyre pressure.

LIGHTING AIDS
RWY: THR identification lights (FLG W, weather depending).
HEL-site: Lighted.

MARKING AIDS
RWY: White cones.
TWY: Blue cones.

CAUTION
Grass cutting may take place at irregular times.



For description VFR - procedures see EHTX AD 2.22.

NOTES:

① During weekends FRI 1600 - SUN 2300 (FRI 1500 - SUN 2200 summertime) and HOL classified E up to and including FL 095.

TMZ A:

② MON-FRI before 0800 (0700) and after 1600 (1500), SAT, SUN and HOL.

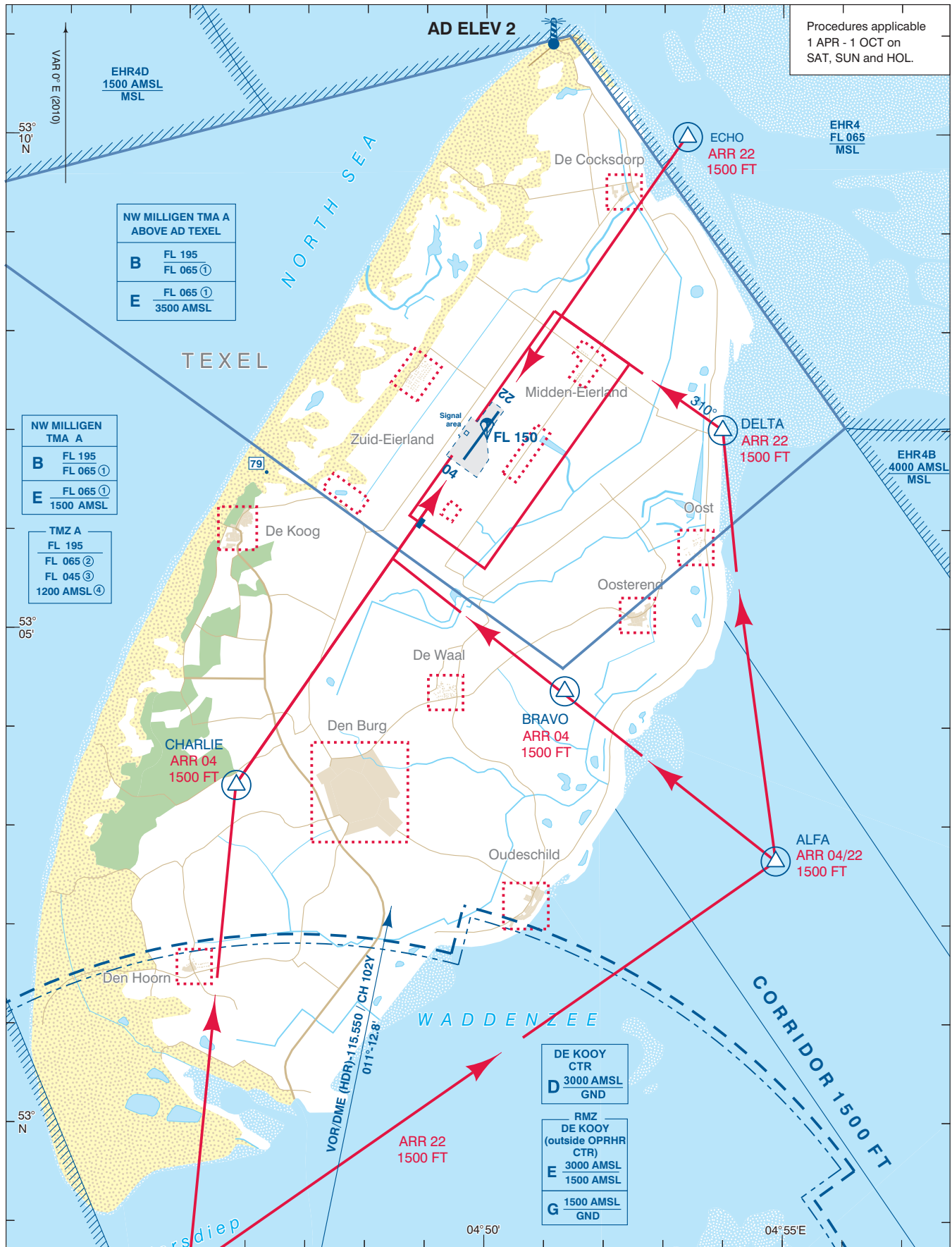
③ MON-FRI 0800-1600 (0700-1500), EXCL HOL: lower limit for non-motorised hanggliders and paragliders.

④ MON-FRI 0800-1600 (0700-1500), EXCL HOL: lower limit 1200 AMSL

For motorised civil air traffic above the natural area Waddenzee the following applies:

- flights below 1500 ft AGL are not allowed.
- when ceiling < 1500 ft AGL or flight visibility < 8 km, flights between 1000 ft AGL and 1500 ft AGL are allowed within the corridors.

Visual circuit marker (orange coloured)	AD Info 119.305 Texel Radio FIC (MIL) 132.350 Dutch MIL Info
DIRECTIONS ARE MAGNETIC DISTANCES IN NM ALTITUDES AND ELEVATIONS IN FEET AMSL HIGHEST KNOWN ELEVATION ON THIS CHART: 79	
SCALE 1 : 100 000	



Procedures applicable
1 APR - 1 OCT on
SAT, SUN and HOL.

NW MILLIGEN TMA A
ABOVE AD TEXEL

B	FL 195 FL 065 ①
E	FL 065 ① 3500 AMSL

NW MILLIGEN TMA A

B	FL 195 FL 065 ①
E	FL 065 ① 1500 AMSL

TMZ A

FL 195
FL 065 ②
FL 045 ③
1200 AMSL ④

DE KOOY CTR
D 3000 AMSL
GND

RMZ DE KOOY
(outside OPRHR CTR)
E 3000 AMSL
1500 AMSL
G 1500 AMSL
GND

For description VFR - procedures see EHTX AD 2.22.

NOTES:

- ① During weekends FRI 1600 - SUN 2300 (FRI 1500 - SUN 2200 summertime) and HOL classified E up to and including FL 095.
- ② MON-FRI before 0800 (0700) and after 1600 (1500), SAT, SUN and HOL.
- ③ MON-FRI 0800-1600 (0700-1500), EXCL HOL: lower limit for non-motorised hanggliders and paragliders.
- ④ MON-FRI 0800-1600 (0700-1500), EXCL HOL: lower limit 1200 AMSL

TMZ A:

- flights below 1500 ft AGL are not allowed.
- when ceiling < 1500 ft AGL or flight visibility < 8 km, flights between 1000 ft AGL and 1500 ft AGL are allowed within the corridors.

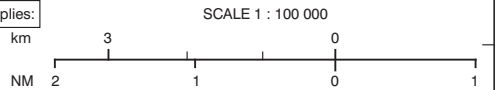
➔ Arrival route

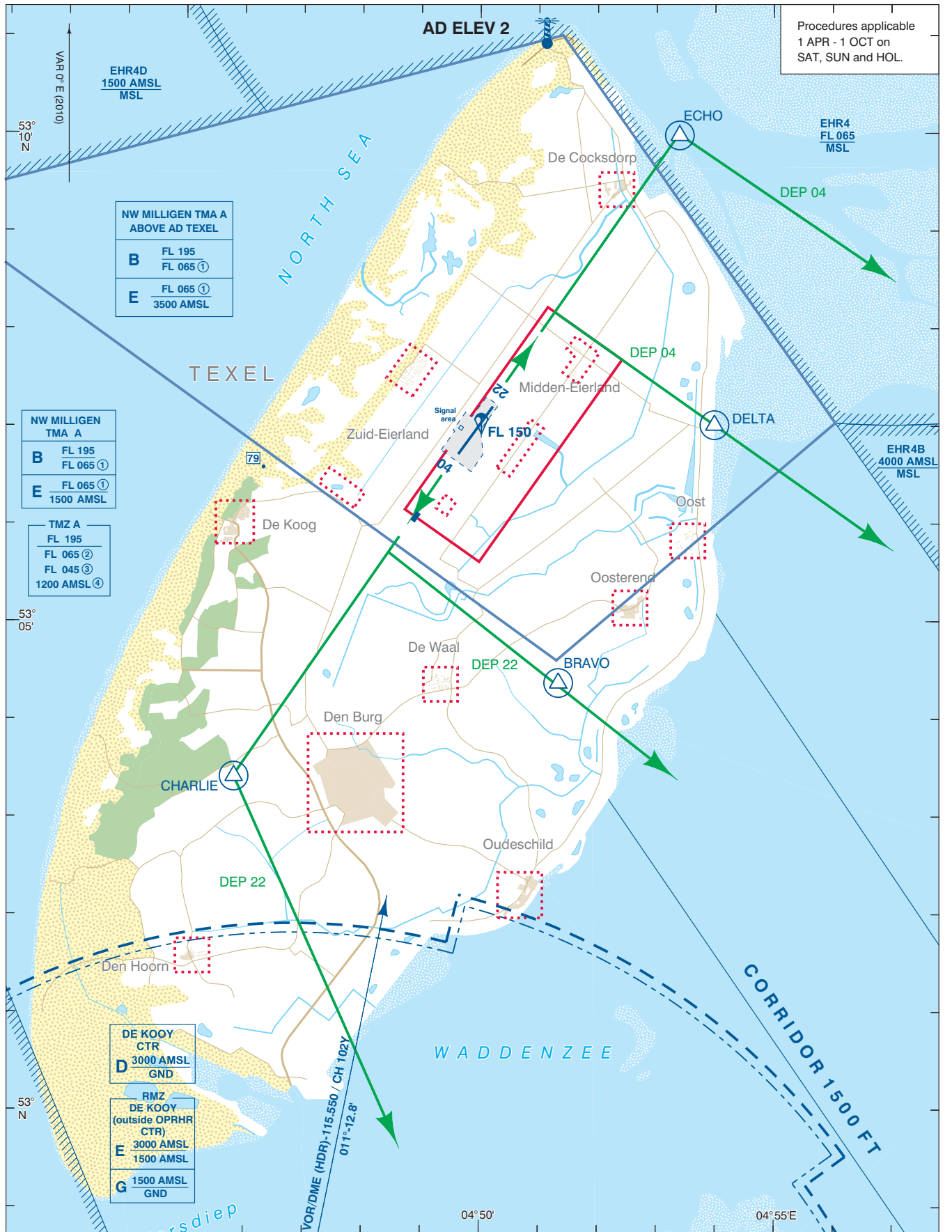
⊕ On request fly-over reporting point

■ Visual circuit marker (orange coloured)

AD Info 119.305 Texel Radio
FIC (MIL) 132.350 Dutch MIL Info

BEARINGS ARE MAGNETIC
DISTANCES IN NM
ALTITUDES AND ELEVATIONS
IN FEET AMSL
HIGHEST KNOWN ELEVATION
ON THIS CHART: 79





Procedures applicable
1 APR - 1 OCT on
SAT, SUN and HOL.

NW MILLIGEN TMA A
ABOVE AD TEXEL

B	FL 195 FL 065 ①
E	FL 065 ① 3500 AMSL

NW MILLIGEN TMA A

B	FL 195 FL 065 ①
E	FL 065 ① 1500 AMSL

TMZ A

FL 195
FL 065 ②
FL 045 ③
1200 AMSL ④

DE KOOY CTR
D 3000 AMSL
GND

RMZ DE KOOY
(outside OPRHR CTR)
E 3000 AMSL
1500 AMSL
G 1500 AMSL
GND

EHR 8
FL 065
MSL

For description VFR - procedures see EHTX AD 2.22.

NOTES:

- ① During weekends FRI 1600 - SUN 2300 (FRI 1500 - SUN 2200 summertime) and HOL classified E up to and including FL 095.
- ② MON-FRI before 0800 (0700) and after 1600 (1500), SAT, SUN and HOL.
- ③ MON-FRI 0800-1600 (0700-1500), EXCL HOL: lower limit for non-motorised hanggliders and paragliders.
- ④ MON-FRI 0800-1600 (0700-1500), EXCL HOL: lower limit 1200 AMSL

For motorised civil air traffic above the natural area Waddenzee the following applies:

- flights below 1500 ft AGL are not allowed.
- when ceiling < 1500 ft AGL or flight visibility < 8 km, flights between 1000 ft AGL and 1500 ft AGL are allowed within the corridors.

→ Departure route

⊙ On request reporting point fly-over

■ Visual circuit marker (orange coloured)

AD Info 119.305 Texel Radio
FIC (MIL) 132.350 Dutch MIL Info

BEARINGS ARE MAGNETIC
DISTANCES IN NM
ALTITUDES AND ELEVATIONS
IN FEET AMSL
HIGHEST KNOWN ELEVATION
ON THIS CHART: 79

